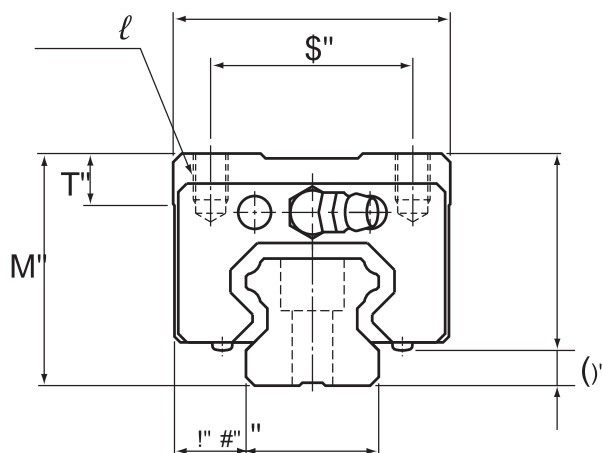
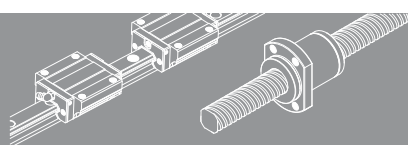


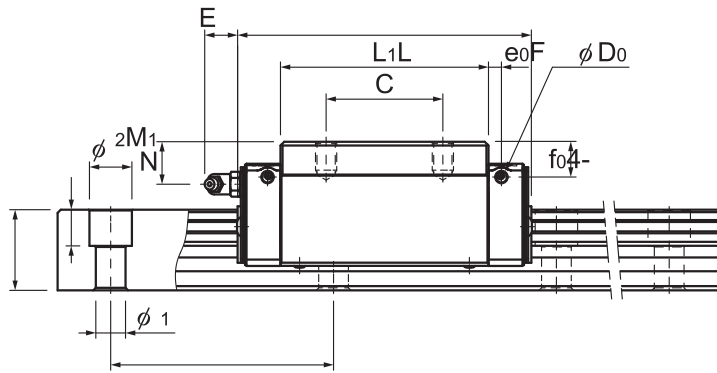
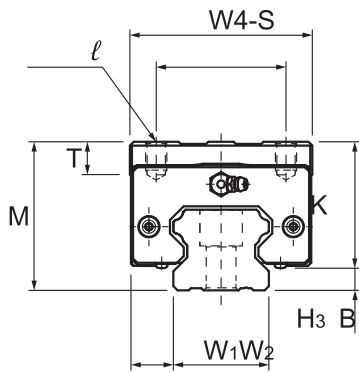
## Models HSR-R, HSR-RM, HSR-LR and HSR-LRM



Model No.	Outer dimensions			LM block dimensions									Grease nipple M	W H <sub>3</sub>	L
	Height	Width	Length			$X \ell$	L <sub>1</sub>	T	K	N	E				
HSR 15R HSR 15RM	28	34	56.6	26	26	M4 x 5	38.8	6	23.3	8.3	5.5	PB1021B	4.7		
HSR 20R HSR 20RM	30	44	74	32	36	M5 x 6	50.8	8	26	5	12	B-M6F	4		
HSR 20LR HSR 20LRM	30	44	90	32	50	M5 x 6	66.8	8	26	5	12	B-M6F	4		
HSR 25R HSR 25RM	40	48	83.1	35	35	M6 x 8	59.5	9	34.5	10	12	B-M6F	5.5		
HSR 25LR HSR 25LRM	40	48	102.2	35	50	M6 x 8	78.6	9	34.5	10	12	B-M6F	5.5		
HSR 30R HSR 30RM	45	60	98	40	40	M8 x 10	70.4	9	38	10	12	B-M6F	7		
HSR 30LR HSR 30LRM	45	60	120.6	40	60	M8 x 10	93	9	38	10	12	B-M6F	7		
HSR 35R HSR 35RM	55	70	109.4	50	50	M8 x 12	80.4	11.7	47.5	15	12	B-M6F	7.5		
HSR 35LR HSR 35LRM	55	70	134.8	50	72	M8 x 12	105.8	11.7	47.5	15	12	B-M6F	7.5		
HSR 45R HSR 45LR	70	86	139 170.8	60	60 80	M10 x 17	98 129.8	15	60	20	16	B-PT1/8	10		
HSR 55R HSR 55LR	80	100	163 201.1	75	75 95	M12 x 18	118 156.1	20.5	67	21	16	B-PT1/8	13		
HSR 65R HSR 65LR	90	126	186 245.5	76	70 120	M16 x 20	147 206.5	23	76	19	16	B-PT1/8	14		
HSR 85R HSR 85LR	110	156	245.6 303	100	80 140	M18 x 25	178.6 236	29	94	23	16	B-PT1/8	16		



## Models HSR-R, HSR-RM, HSR-LR and HSR-LRM

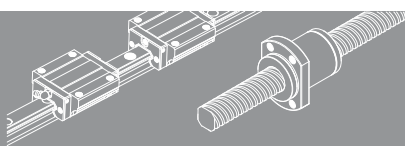


LM Guide

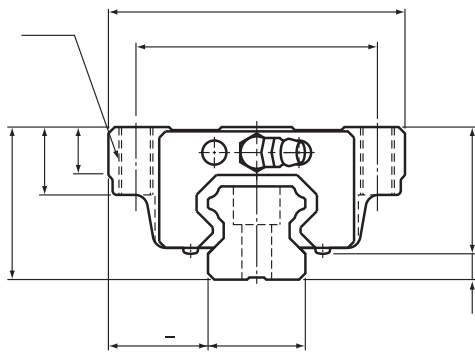
Models HSR45 to 85R/LR/XR/XLR

Unit: mm

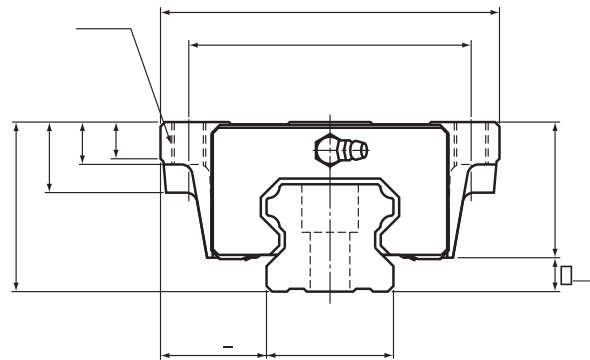
	LM rail dimensions						Basic load rating		Static permissible moment kN·m <sup>□</sup>					Mass	
	Width		Height	Pitch		Length <sup>□</sup>	C	C <sub>0</sub>	M <sub>A</sub> M <sub>B</sub> M <sub>C</sub>				LM block	LM rail	
	W <sub>1</sub> 0.05	W <sub>2</sub>	M <sub>1</sub>	F	d <sub>1</sub> <sup>x</sup> d <sub>2</sub> <sup>x</sup> h	Max	kN	kN	1 block	Double blocks	1 block	Double blocks	1 block	kg	kg/m
	15	9.5	15	60	4.5 × 7.5 × 5.3	3000 (1240)	10.9	15.7	0.0945	0.527	0.0945	0.527	0.0998	0.18	1.5
	15	9.5	15	60	4.5 × 7.5 × 5.3	3000 (1240)	14.2	22.9	0.194	0.984	0.194	0.984	0.145	0.26	1.5
	20	12	18	60	6 × 9.5 × 8.5	3000 (1480)	19.8	27.4	0.218	1.2	0.218	1.2	0.235	0.25	2.3
	20	12	18	60	6 × 9.5 × 8.5	3000 (1480)	23.9	35.8	0.363	1.87	0.363	1.87	0.307	0.35	2.3
	23	12.5	22	60	7 × 11 × 9	3000 (2020)	27.6	36.4	0.324	1.8	0.324	1.8	0.366	0.54	3.3
	23	12.5	22	60	7 × 11 × 9	3000 (2020)	35.2	51.6	0.627	3.04	0.627	3.04	0.518	0.67	3.3
	28	16	26	80	9 × 14 × 12	3000 (2520)	40.5	53.7	0.599	3.1	0.599	3.1	0.652	0.9	4.8
	28	16	26	80	9 × 14 × 12	3000 (2520)	48.9	70.2	0.995	4.89	0.995	4.89	0.852	1.1	4.8
	34	18	29	80	9 × 14 × 12	3000 (2520)	53.9	70.2	0.895	4.51	0.895	4.51	1.05	1.5	6.6
	34	18	29	80	9 × 14 × 12	3000 (2520)	65	91.7	1.49	7.13	1.49	7.13	1.37	2	6.6
	45	20.5	38	105	14 × 20 × 17	3090	82.2 100	101 135	1.5 2.59	8.37 13.4	1.5 2.59	8.37 13.4	1.94 2.6	2.6 3.1	11
	53	23.5	44	120	16 × 23 × 20	3060	121 148	146 194	2.6 4.46	14.1 22.7	2.6 4.46	14.1 22.7	3.43 4.56	4.3 5.4	15.1
	63	31.5	53	150	18 × 26 × 22	3000	195 249	228 323	5.08 9.81	25 45.6	5.08 9.81	25 45.6	6.2 8.79	7.3 9.7	22.5 22.5
	63	31.5	53	150	18 × 26 × 22	3000	195 249	228 323	5.08 9.81	25 45.6	5.08 9.81	25 45.6	6.2 8.79	7.3 9.3	22.5
	85	35.5	65	180	24 × 35 × 28	3000	304 367	355 464	10.2 16.9	51.2 81	10.2 16.9	51.2 81	12.8 16.7	13 16	35.2



## Models HSR-A and HSR-AM, Models HSR-LA and HSR-LAM

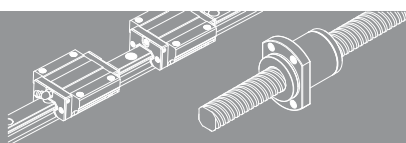


Models HSR-A to HSR-AM

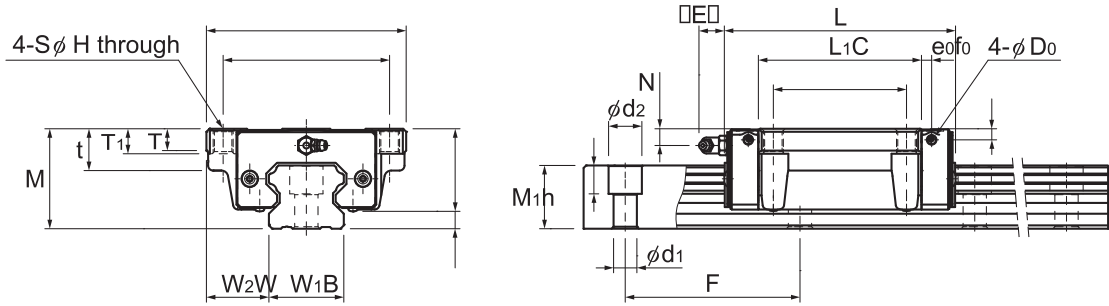


Models HSR-LA to HSR-LAM

Model No.	Outer dimensions			LM block dimensions											Grease nipple	H <sub>3</sub>
	Height	Width	Length					t	T	T <sub>1</sub>	K	N	E			
HSR 15A HSR 15AM	24	47	56.6	38	30	M5	38.8	—	7	11	19.3	4.3	5.5	PB1021B	4.7	
HSR 20A HSR 20AM	30	63	74	53	40	M6	50.8	—	9.5	10	26	5	12	B-M6F	4	
HSR 20LA HSR 20LAM	30	63	90	53	40	M6	66.8	—	9.5	10	26	5	12	B-M6F	4	
HSR 25A HSR 25AM	36	70	83.1	57	45	M8	59.5	—	11	16	30.5	6	12	B-M6F	5.5	
HSR 25LA HSR 25LAM	36	70	102.2	57	45	M8	78.6	—	11	16	30.5	6	12	B-M6F	5.5	
HSR 30A HSR 30AM	42	90	98	72	52	M10	70.4	—	9	18	35	7	12	B-M6F	7	
HSR 30LA HSR 30LAM	42	90	120.6	72	52	M10	93	—	9	18	35	7	12	B-M6F	7	
HSR 35A HSR 35AM	48	100	109.4	82	62	M10	80.4	—	12	21	40.5	8	12	B-M6F	7.5	
HSR 35LA HSR 35LAM	48	100	134.8	82	62	M10	105.8	—	12	21	40.5	8	12	B-M6F	7.5	
HSR 45A HSR 45LA	60	120	139 170.8	100	80	M12	98 129.8	25	13	15	50	10	16	B-PT1/8	10	
HSR 55A HSR 55LA	70	140	163 201.1	116	95	M14	118 156.1	29	13.5	17	57	11	16	B-PT1/8	13	
HSR 65A HSR 65LA	90	170	186 245.5	142	110	M16	147 206.5	37	21.5	23	76	19	16	B-PT1/8	14	
HSR 85A HSR 85LA	110	215	245.6 303	185	140	M20	178.6 236	55	28	30	94	23	16	B-PT1/8	16	



## Models HSR-A and HSR-AM, Models HSR-LA and HSR-LAM

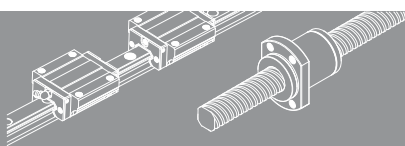


Models HSR45 to 65C/LC/XC/XLC

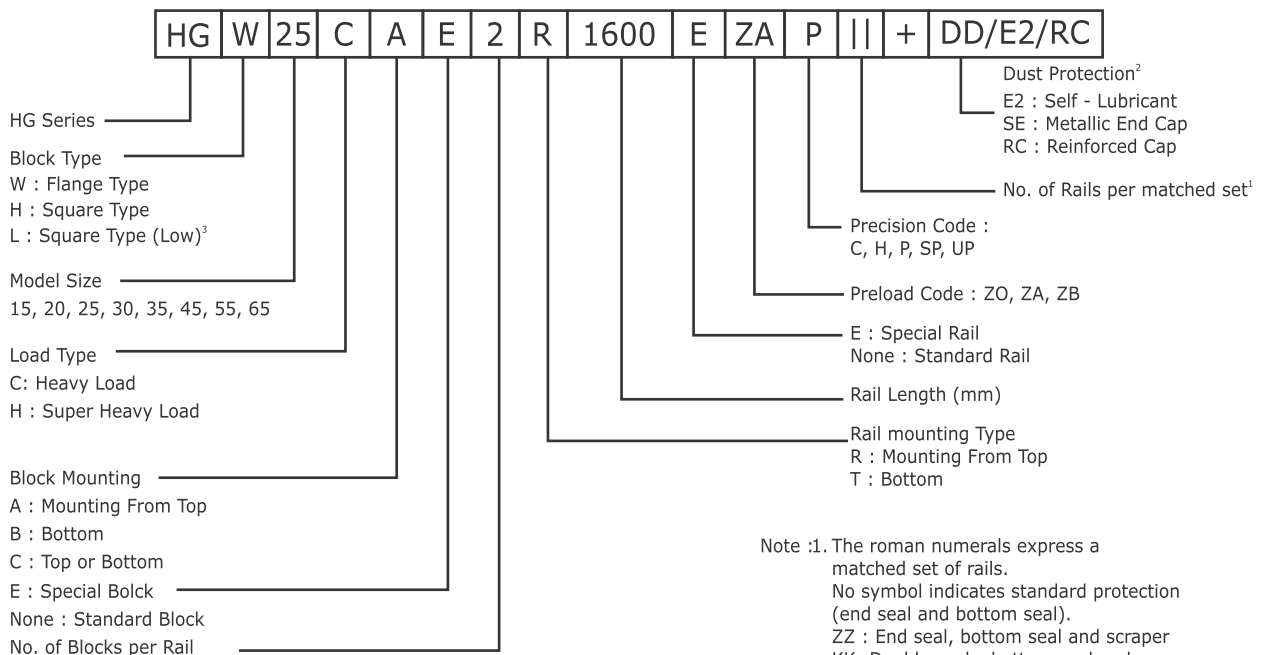
Unit: mm

LM Guide

	LM rail dimensions						Basic load rating		Static permissible moment kN•m <sup>□</sup>					Mass	
	Width	Height	Pitch	Length <sup>□</sup>	C	C <sub>0</sub>	M <sub>A</sub> M <sub>B</sub> M <sub>C</sub> M <sub>LM</sub>					block	LM rail		
	W <sub>1</sub> 0.05	W <sub>2</sub>	M <sub>1</sub>				d <sub>1</sub> X	d <sub>2</sub> X h	Max	kN	kN			1 block	Double blocks
	15	16	15	60	4.5 X 7.5 X 5.3	3000 (1240)	10.9	15.7	0.0945	0.527	0.0945	0.527	0.0998	0.2	1.5
	15	16	15	60	4.5 X 7.5 X 5.3	3000 (1240)	14.2	22.9	0.194	0.984	0.194	0.984	0.145	0.29	1.5
	20	21.5	18	60	6 X 9.5 X 8.5	3000 (1480)	19.8	27.4	0.218	1.2	0.218	1.2	0.235	0.35	2.3
	20	21.5	18	60	6 X 9.5 X 8.5	3000 (1480)	23.9	35.8	0.363	1.87	0.363	1.87	0.307	0.47	2.3
	23	23.5	22	60	7 X 11 X 9	3000 (2020)	27.6	36.4	0.324	1.8	0.324	1.8	0.366	0.59	3.3
	23	23.5	22	60	7 X 11 X 9	3000 (2020)	35.2	51.6	0.627	3.04	0.627	3.04	0.518	0.75	3.3
	28	31	26	80	9 X 14 X 12	3000 (2520)	40.5	53.7	0.599	3.1	0.599	3.1	0.652	1.1	4.8
	28	31	26	80	9 X 14 X 12	3000 (2520)	48.9	70.2	0.995	4.89	0.995	4.89	0.852	1.3	4.8
	34	33	29	80	9 X 14 X 12	3000 (2520)	53.9	70.2	0.895	4.51	0.895	4.51	1.05	1.6	6.6
	34	33	29	80	9 X 14 X 12	3000 (2520)	65	91.7	1.49	7.13	1.49	7.13	1.37	2.0	6.6
	45	37.5	38	105	14 X 20 X 17	3090	82.2 100	101 135	1.5 2.59	8.37 13.4	1.5 2.59	8.37 13.4	1.94 2.6	2.8 3.3	11 11
	53	43.5	44	120	16 X 23 X 20	3060	121 148	146 194	2.6 4.46	14.1 22.7	2.6 4.46	14.1 22.7	3.43 4.56	4.5 5.7	15.1 15.1
	63	53.5	53	150	18 X 26 X 22	3000	195 249	228 323	5.08 9.81	25 45.6	5.08 9.81	25 45.6	6.2 8.79	8.5 10.7	22.5 22.5



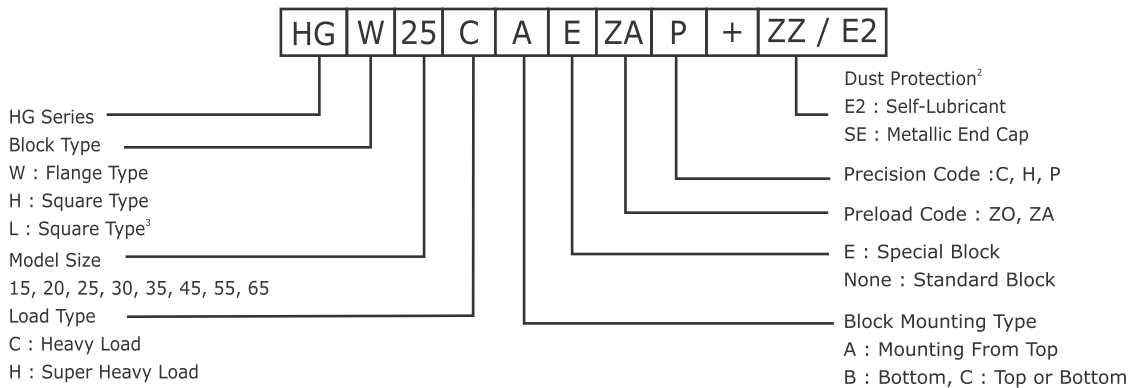
## (1) Non-interchangeable type



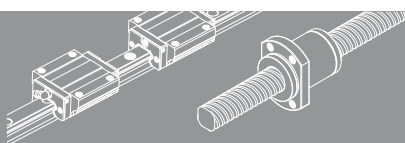
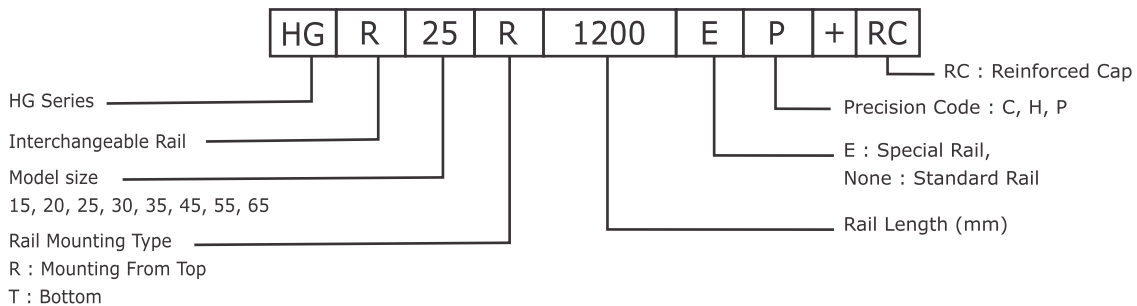
Note :1. The roman numerals express a matched set of rails.  
No symbol indicates standard protection (end seal and bottom seal).  
ZZ : End seal, bottom seal and scraper  
KK : Double seals, bottom seal and scraper.  
DD : Double seals and bottom seal  
Block type HGL is the low profile design of HGH (square type), the assembled height is same as HGW (flange type) in same size.

## (2) Non-interchangeable type

Model Number of HG Block

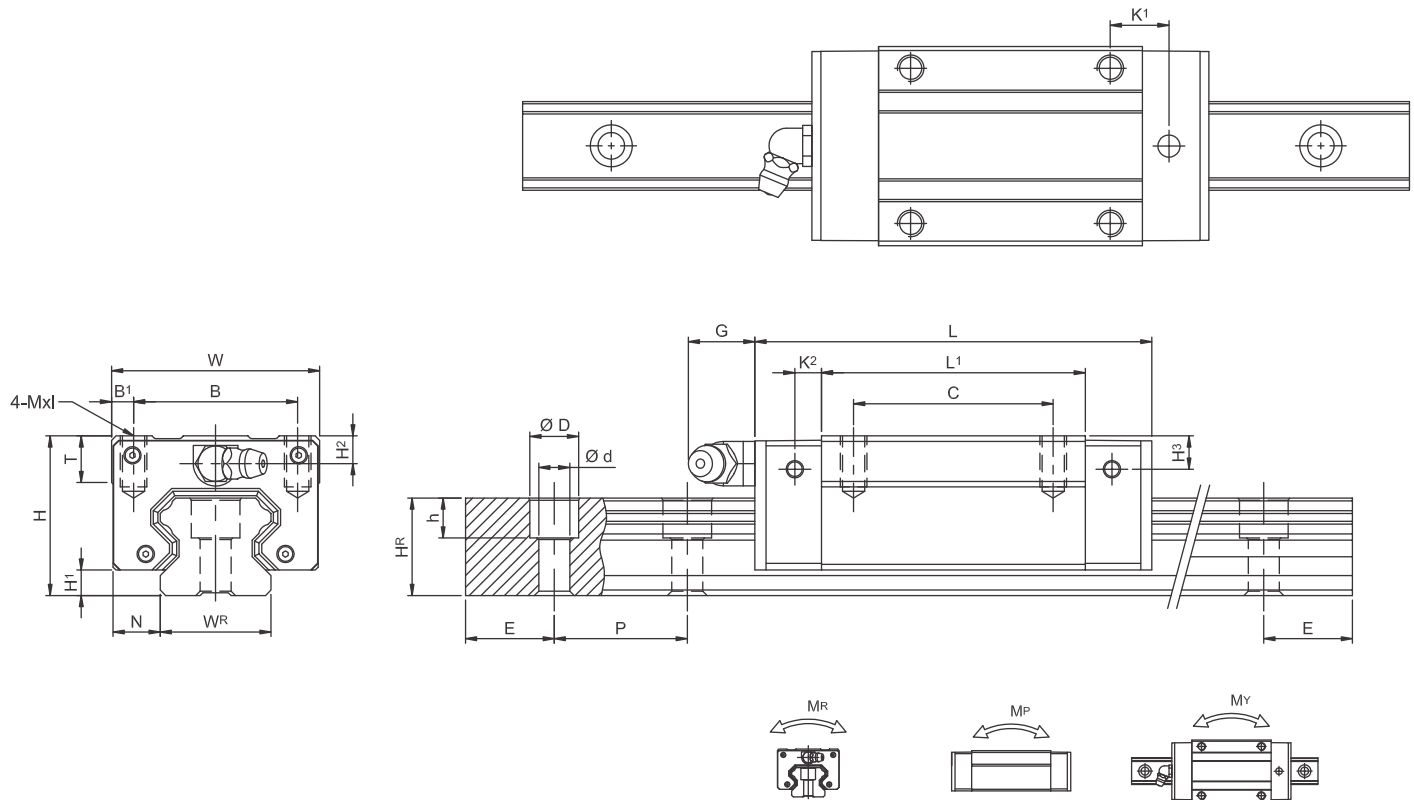


Model Number of HG Block

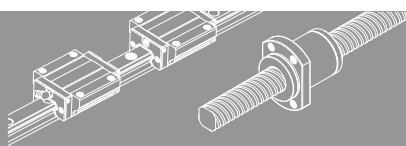


## 2-1-13 Dimensions for HIWIN HG Series

HGH-CA / HGH-HA



Model No.	Dimensions Of Assembly (mm)			Dimensions Of Block (mm)														Dimensions Of Rail (mm)				Mounting Bolt for Rail (mm)	Basic Dynamic Load Rating C(kN)	Basic Static Load Rating C <sub>0</sub> (kN)	Static Rated Moment			Weight			
	H	H <sub>1</sub>	N	W	B	B <sub>1</sub>	C	L <sub>1</sub>	L	K1	K2	G	MxI	T	H <sub>2</sub>	H <sub>2</sub>	W <sub>2</sub>	H <sub>2</sub>	D	h	d				P	E	M <sub>1</sub> kN-m	M <sub>2</sub> kN-m	M <sub>3</sub> kN-m	Block Kg	Rail Kg/m
HGH15CA	28	4.3	9.5	34	26	4	26	39.4	61.4	10	4.85	5.3	M4x5	6	7.95	7.7	15	15	7.5	5.3	4.5	60	20	M4x16	11.38	16.97	0.12	0.10	0.10	0.18	1.45
HGH20CA	30	4.6	12	44	32	6	36	50.5	77.5	12.25	6	12	M5x6	8	6	6	20	17.5	9.5	8.5	6	60	20	M5x16	17.5	27.76	0.27	0.20	0.20	0.30	2.21
HGH20HA							50	65.2	92.2	12.6															26.48	36.49	0.42	0.33	0.33	0.51	
HGH25CA	40	5.5	12.5	48	35	6.5	35	58	84	16.8	6	12	M6x8	8	10	9	23	22	11	9	7	60	20	M6x20	26.48	36.49	0.42	0.33	0.33	0.51	3.21
HGH25HA							50	78.6	104.6	19.6															32.75	49.44	0.56	0.57	0.57	0.69	
HGH30CA	45	6	16	60	40	10	40	70	97.4	20.25	6	12	M8x10	8.5	9.5	13.8	28	26	14	12	9	80	20	M8x25	38.74	52.19	0.66	0.53	0.53	0.88	4.47
HGH30HA							60	93	120.4	21.75															47.27	69.16	0.88	0.92	0.92	1.16	
HGH35CA	55	7.5	18	70	50	10	50	80	112.4	20.6	7	12	M8x12	10.2	16	19.6	34	29	14	12	9	80	20	M8x25	49.52	69.16	1.16	0.81	0.81	1.45	6.30
HGH35HA							72	105.8	138.2	22.5															60.21	91.63	1.54	1.40	1.40	1.92	
HGH45CA	70	9.5	20.5	86	60	13	60	97	139.4	23	10	12.9	M10x17	16	18.5	30.5	45	38	20	17	14	105	22.5	M12x35	77.57	102.71	1.98	1.55	1.55	2.73	10.41
HGH45HA							80	128.8	171.2	28.9															94.54	136.46	2.63	2.68	2.68	3.61	
HGH55CA	80	13	23.5	100	75	12.5	75	117.7	166.7	27.35	11	12.9	M12x18	17.5	22	29	53	44	23	20	16	120	30	M14x45	114.44	148.33	3.69	2.64	2.64	4.17	15.08
HGH55HA							95	155.8	204.8	36.4															139.35	196.20	4.88	4.57	4.57	5.49	
HGH65CA	90	15	31.5	126	76	25	70	144.2	200.2	43.1	14	12.9	M16x20	25	15	15	63	53	26	22	18	150	35	M16x50	163.63	215.33	6.65	4.27	4.27	4.27	21.18
HGH65HA							120	203.6	259.6	47.8															208.36	303.13	9.38	7.38	7.38	7.38	

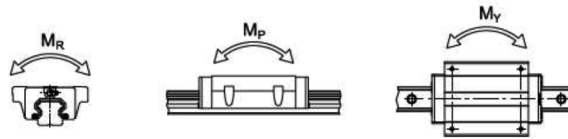
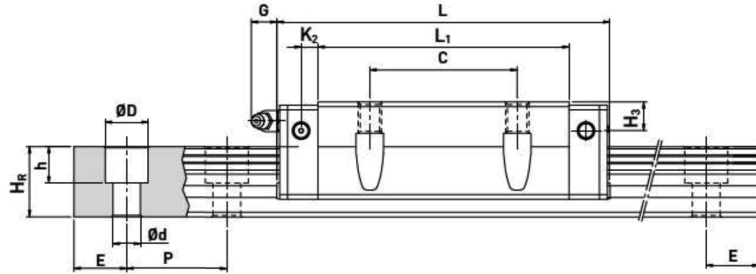
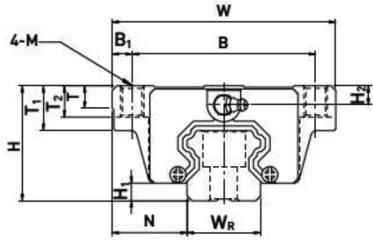
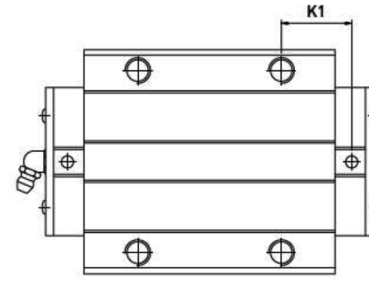


# LINEAR GUIDEWAYS - HG SERIES



## HG Series Heavy Load Ball Type

HGW-CC / HGW-HC



Model No.	Dimensions of assembly (mm)		Dimensions of Block (mm)															Dimensions of Rail (mm)										Mounting bolt for rail (mm)	Basic Dynamic Load Rasting C(kN)	Basic Static Load Rasting C1(kN)	Static Rated moment			Weight	
	H	H1	N	W	B	B1	C	L1	L	K1	K2	G	M	T	T1	T2	H2	H3	W2	H2	D	h	d	P	E	MR kN-m	MP kN-m				MY kN-m	Block kg	Rail kg/m		
HGW15CC	24	4.3	16	47	38	4.5	30	39.4	61.4	8	4.85	5.3	M5	6	8.9	6.95	3.95	3.7	15	15	7.5	5.3	4.5	60	20	M4X16	14.7	23.47	0.12	0.10	0.10	0.17	1.45		
HGW20CC	30	4.6	21.5	63	53	5	40	50.5	77.5	10.25	6	12	M6	8	10	9.5	6	6	20	17.5	9.5	8.5	6	60	20	M5X16	27.1	36.68	0.27	0.20	0.20	0.40	2.21		
HGW20CC								65.2	92.2	17.6																	32.7	47.96	0.35	0.35	0.35	0.52			
HGW25CC	36	5.5	23.5	70	57	6.5	45	58	84	10.7	6	12	M8	8	14	10	6	6	23	22	11	9	7	60	20	M6X20	37.9	52.82	0.42	0.33	0.33	0.59	3.21		
HGW25CC								78.6	104.6	21																	42.2	69.07	0.56	0.57	0.57	0.80			
HGW30CC	42	6	31	90	72	9	52	70	97.4	14.25	6	12	M10	8.5	16	10	6.5	6.5	28	26	14	12	9	80	20	M8X25	48.5	71.87	0.66	0.53	0.53	1.09	4.47		
HGW30CC								93	120.4	25.75																	58.6	93.99	0.88	0.92	0.92	1.44			
HGW35CC	48	7.5	33	100	82	9	62	80	112.4	14.6	7	12	M10	10.1	18	13	9	9	34	29	14	12	9	80	20	M8X25	64.6	93.88	1.16	0.81	0.81	1.56	6.30		
HGW35CC								105.8	138.2	27.5																	77.9	122.77	1.54	1.40	1.40	2.06			
HGW45CC	60	9.5	37.5	120	100	10	80	97	198.4	13	10	12.9	M12	15.1	22	15	8.5	8.5	45	38	20	17	14	105	22.5	M12X35	103.8	146.71	1.98	1.55	1.55	2.79	10.41		
HGW45CC								128.8	171.2	28.9																	125.3	191.85	2.63	2.68	2.68	3.69			
HGW55CC	70	13	43.5	140	116	12	95	117.7	166.7	17.35	11	12.9	M14	17.5	26.5	17	12	12	53	44	23	20	16	120	30	M14X45	153.2	211.23	3.69	2.64	2.64	4.52	15.08		
HGW55CC								155.8	204.8	36.4																	184.9	276.23	4.88	4.57	4.57	5.96			
HGW65CC	90	15	53.5	170	142	14	110	144.2	200.2	23.1	14	12.9	M16	25	37.5	23	15	15	63	53	26	22	18	150	35	M16X50	213.2	287.48	6.65	4.27	4.27	9.17	21.18		
HGW65CC								203.6	259.6	52.8																	277.8	420.17	9.38	7.38	7.38	12.89			

Note : 1kgf = 9.81 N

