

LM BUSH BEARING

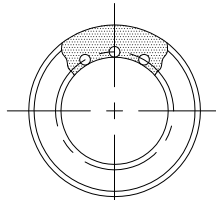
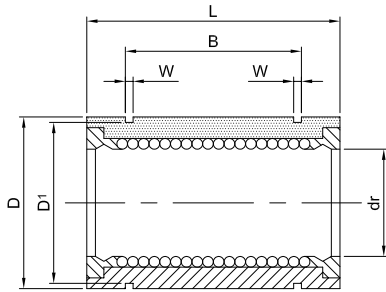
Standard Type



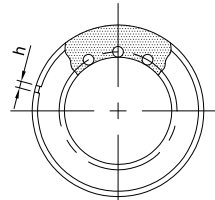
AJ-Type



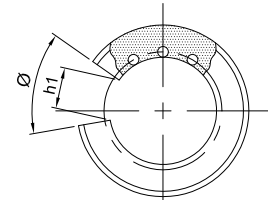
OP Type



LM

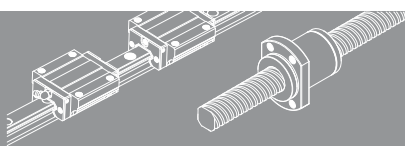


LM...AJ



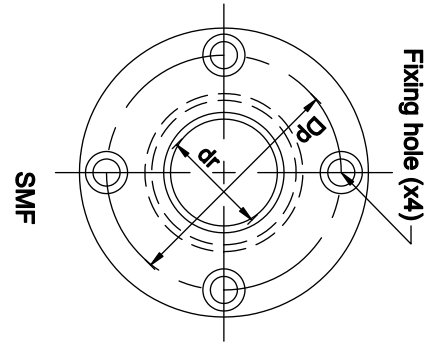
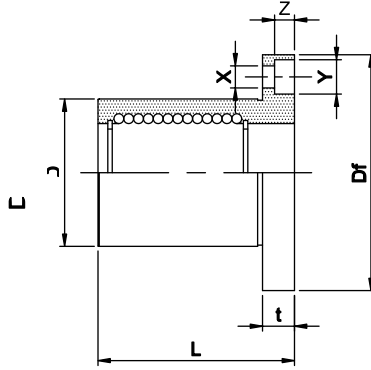
LM...OP

Nominal Shaft Diameter mm	Model No.						Main Dimensions and Tolerance											Radial Clearance (max) μm	Basic Load Rating					
	LM	Ball Circuit	LM...AJ	Ball Circuit	LM...OP	Ball Circuit	mm	dr		D		L		B		W mm	D1 mm		h mm	h1 mm	θ	Eccentricity μm	dynamic C(kgf)	static Co(kgf)
	LM...UU	LM...UU-AJ	LM...UU-OP	Tolerances μm	Tolerances μm	Tolerances μm		Tolerances μm																
3	LM 3	4	-	-	-	-	3		7		10												7	10.7
4	LM 4	4	-	-	-	-	4	0 -8	8	0 -8	12	0 -120									8		9	13
5	LM 5 LM 5UU	4	-	-	-	-	5		10		15		10.2										17	21
6	LM 6 LM 6UU	4	LM 6AJ LM 6UU-AJ	4	-	-	6		12		19		13.5										21	27
8	LM 8 LM 8SUU	4	LM 8SAJ LM 8SUU-AJ	4	-	-	8		15	0 -11	17		11.5										18	22
8	LM 8 LM 8UU	4	LM 8AJ LM 8UU-AJ	4	-	-	8		15		24		17.5										28	40
10	LM 10 LM 10UU	4	LM 10AJ LM 10UU-AJ	4	LM 10OP LM 10UU-OP	3	10	0 -9	19		29		22	0 -200							12		38	56
12	LM 12 LM 12UU	4	LM 12AJ LM 12UU-AJ	4	LM 12OP LM 12UU-OP	3	12		21	0 -13	30	0 -200	23										42	61
13	LM 13 LM 13UU	4	LM 13AJ LM 13UU-AJ	4	LM 13OP LM 13UU-OP	3	13		23		32		23										52	80
16	LM 16 LM 16UU	4	LM 16AJ LM 16UU-AJ	4	LM 16OP LM 16UU-OP	3	16		28		37		26.5										79	120
20	LM 20 LM 20UU	5	LM 20AJ LM 20UU-AJ	5	LM 20OP LM 20UU-OP	4	20		32		42		30.5										90	140
25	LM 25 LM 25UU	6	LM 25AJ LM 25UU-AJ	6	LM 25OP LM 25UU-OP	5	25	0 -10	40	0 -16	59		41								15		100	160
30	LM 30 LM 30UU	6	LM 30AJ LM 30UU-AJ	6	LM 30OP LM 30UU-OP	5	30		45		64		44.5										160	280
35	LM 35 LM 35UU	6	LM 35AJ LM 35UU-AJ	6	LM 35OP LM 35UU-OP	5	35		52		70	0 -300	49.5	0 -300									170	320
40	LM 40 LM 40UU	6	LM 40AJ LM 40UU-AJ	6	LM 40OP LM 40UU-OP	5	40	0 -12	60	0 -19	80		60.5								20		220	410
50	LM 50 LM 50UU	6	LM 50AJ LM 50UU-AJ	6	LM 50OP LM 50UU-OP	5	50		80		100		74										390	810
60	LM 60 LM 60UU	6	LM 60AJ LM 60UU-AJ	6	LM 60OP LM 60UU-OP	5	60	0 -15	90	0 -22	110		85										480	1020
80	LM 80 LM 80UU	6	LM 80AJ LM 80UU-AJ	6	LM 80OP LM 80UU-OP	5	80		120		140	0 -400	105.5	0 -400									750	1630



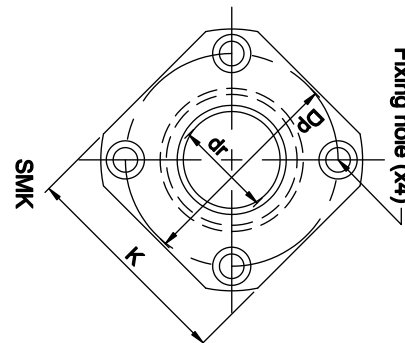
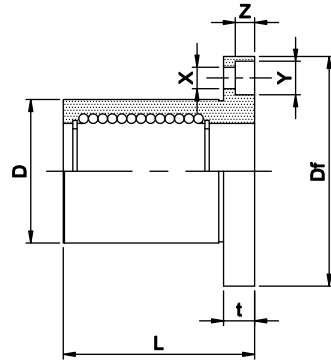
FLANGED LINER BEARINGS

SMF



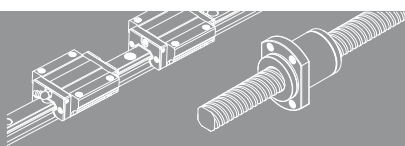
Nominal Part No				Major Dimensions and Tolerance (mm)											Eccentricity μm	Squareness μm	Basic load Rating		Nominal Part No	
Steel Retainer	Resin Retainer	Ball Circuit	Weight g	dr	Tolerance	D	Tolerance	L	Tolerance	Df	t	Dp	X	Y			Z	Dynamic C(N)		Static Co(N)
SMF6	SMF6G	4	24	6		12	0	19		28	5	20	3.5	6	3.1	12	12	206	265	SMF6
SMF8S	SMF8SG	4	32	8		15	-0.013	17		32	5	24	3.5	6	3.1	12	12	176	216	SMF8S
SMF8	SMF8G	4	37	8	0	15		24		32	5	24	3.5	6	3.1	12	12	274	392	SMF8
SMF10	SMF10G	4	72	10	-0.009	19		29		40	6	29	4.5	7.5	4.1	12	12	372	549	SMF10
SMF12	SMF12G	4	76	12		21	0	30		42	6	32	4.5	7.5	4.1	12	12	510	784	SMF12
SMF13	SMF13G	4	88	13		23	-0.016	32		43	6	33	4.5	7.5	4.1	12	12	510	784	SMF13
SMF16	SMF16G	5	120	16		28		37		48	6	38	4.5	7.5	4.1	12	12	774	1,180	SMF16
SMF20	SMF20G	5	180	20		32		42	±0.3	54	8	43	5.5	9	5.1	15	15	882	1,370	SMF20
SMF25	SMF25G	6	340	25	0	40	0	59		62	8	51	5.5	9	5.1	15	15	980	1,570	SMF25
SMF30	SMF30G	6	470	30	-0.010	45	-0.019	64		74	10	60	6.6	11	6.1	15	15	1,570	2,740	SMF30
SMF35	SMF35G	6	650	35		52		70		82	10	67	6.6	11	6.1	20	20	1,670	3,140	SMF35
SMF40	SMF40G	6	1,060	40	0	60	0	80		96	13	78	9	14	8.1	20	20	2,160	4,020	SMF40
SMF50	SMF50G	6	2,200	50	-0.012	80	-0.022	100		166	13	98	9	14	8.1	20	20	3,820	7,940	SMF50
SMF60	SMF60G	6	3,000	60	0	90	0	110		134	18	112	11	17	11.1	25	25	4,700	10,000	SMF60

SMK

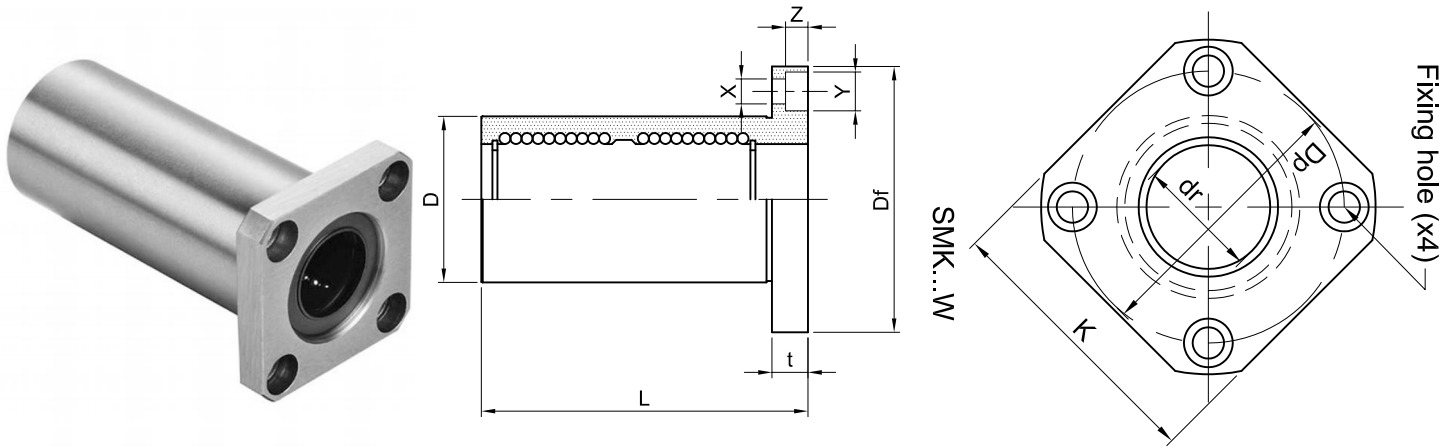


Nominal Part No				Major Dimensions and Tolerance (mm)											Eccentricity μm	Squareness μm	Basic load Rating		Nominal Part No	
Steel Retainer	Resin Retainer	Ball Circuit	Weight g	dr	Tolerance	D	Tolerance	L	Tolerance	Df	t	Dp	X	Y			Z	Dynamic C(N)		Static Co(N)
SMK 6	SMK6G	4	24	6		12	0	19		28	5	20	3.5	6	3.1	12	12	206	265	SMK6
SMK8	SSMK8SG	4	32	8		15	-0.013	17		32	5	24	3.5	6	3.1	12	12	176	216	SMK8S
SMK8	SMK8G	4	37	8	0	15		24		32	5	24	3.5	6	3.1	12	12	274	392	SMK8
SMK10	SMK10G	4	72	10	-0.009	19		29		40	6	29	4.5	7.5	4.1	12	12	372	549	SMK10
SMK12	SMK12G	4	76	12		21	0	30		42	6	32	4.5	7.5	4.1	12	12	510	784	SMK12
SMK13	SMK13G	4	88	13		23	-0.016	32		43	6	33	4.5	7.5	4.1	12	12	510	784	SMK13
SMK16	SMK16G	5	120	16		28		37		48	6	38	4.5	7.5	4.1	12	12	774	1,180	SMK16
SMK20	SMK20G	5	180	20		32		42	±0.3	54	8	43	5.5	9	5.1	15	15	882	1,370	SMK20
SMK25	SMK25G	6	340	25	0	40	0	59		62	8	51	5.5	9	5.1	15	15	980	1,570	SMK25
SMK30	SMK30G	6	470	30	-0.010	45	-0.019	64		74	10	60	6.6	11	6.1	15	15	1,570	2,740	SMK30
SMK35	SMK35G	6	650	35		52		70		82	10	67	6.6	11	6.1	20	20	1,670	3,140	SMK35
SMK40	SMK40G	6	1,060	40	0	60	0	80		96	13	78	9	14	8.1	20	20	2,160	4,020	SMK40
SMK50	SMK50G	6	2,200	50	-0.012	80	-0.022	100		116	13	98	9	14	8.1	20	20	3,820	7,940	SMK50
SMK60	SMK60G	6	3,000	60	0	90	0	110		134	18	112	11	17	11.1	25	25	4,700	10,000	SMK60

SI Unit IN= 0. 102 kgf



FLANGED LINER BEARINGS



Example **SMK 16 G W UU SK**

Standard

Inner contact diameter

Retainer material

Blank	Steel
G	Resin

Double-wide type

Outer cylinder surface treatment

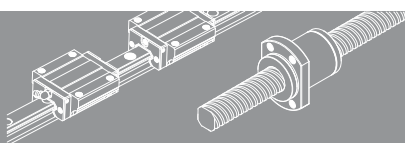
Blank	No surface treatment
SK	Electroless nickel plating

Seal

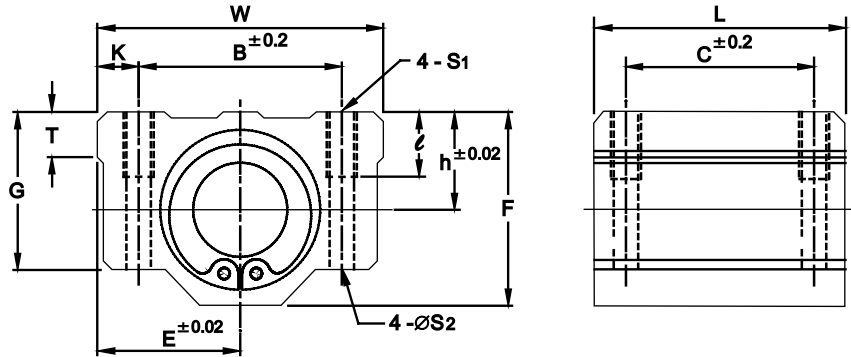
Blank	Without seal
UU	Seals on both sides

Nominal Part No				Major Dimensions and Tolerance (mm)											Eccentricity μm	Squareness μm	Basic load Rating		Nominal Part No	
Steel Retainer	Resin Retainer	Ball Circuit	Weight g	dr	Tolerance	D	Tolerance	L	Tolerance	Flange							Dynamic C(N)	Static Co(N)		
									Df	t	Dp	X	Y	Z						
SMK 6W	SMK 6GW	4	25	6		12	0	35		28	5	20	3.5	6.5	3.1	15	15	323	530	SMK 6W
SMK 8W	SMK 8GW	4	43	8		15	-0.010	45		32	5	24	3.5	6.5	3.1	15	15	431	784	SMK 8W
SMK10W	SMK10GW	4	78	10	0	19		55		40	6	29	4.5	8	4.1	15	15	588	1,100	SMK10W
SMK12W	SMK12GW	4	90	12	-0.010	21	0	57		42	6	32	4.5	8	4.1	15	15	813	1,570	SMK12W
SMK13W	SMK13GW	4	108	13		12	0.016	61		43	6	33	4.5	8	4.1	15	15	813	1,570	SMK13W
SMK16W	SMK16GW	5	165	16		28		70	-0.3	48	6	38	4.5	8	4.1	15	15	1,230	2,350	SMK16W
SMK20W	SMK20GW	5	225	20		32		80		54	8	43	5.5	9.5	5.1	20	20	1,400	2,740	SMK20W
SMK25W	SMK25GW	6	500	25	0	40	0	112		62	8	51	5.5	9.5	5.1	20	20	1,560	3,140	SMK25W
SMK30W	SMK30GW	6	590	30	-0.012	45	-0.019	123		74	10	60	6.6	11	6.1	20	20	2,490	5,490	SMK30W
SMK35W	SMK35GW	6	930	35	0	52	0	135		82	10	67	6.6	11	6.1	25	25	2,650	6,270	SMK35W
SMK40W	SMK40GW	6	1,380	40	-0.015	60	-0.022	154		96	13	78	9	14	8.1	25	25	3,430	8,040	SMK40W
SMK50W	SMK50GW	6	3,400	50	0	80	0	192		116	13	89	9	14	8.1	25	25	6,080	15,900	SMK50W
SMK60W	SMK60GW	6	4,060	60	-0.020	90	-0.025	211		134	18	112	11	17.5	11.1	30	30	7,550	20,000	SMK60W

SI Unit IN= 0. 102 kgf



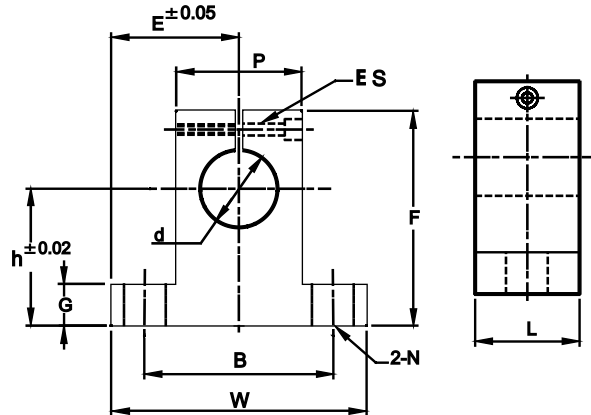
LINER BEARINGS WITH HOUSING



HOUSING-CLOSE TYPE (HF-- UU SERIES)

Model No.	Nominal shaft diameter	Main Dimensions							Mounting Dimensions						LM Bearing Model No.	dynamic C (kg)	static Co (kg)	* Unit Weight g
		h	E	W	L	F	G	T	B	C	K	S ₁	S ₂	I				
HF16	16	19	25	50	44	38.5	32.5	9	36	34	7	M5	4.3	12	LM16UU	79	120	200
HF20	20	21	27	54	50	41	35	11	40	40		M6	5.2		LM20UU	90	140	255
HF25	25	26	38	76	67	51.5	42	12	54	50	10	M8	7	18	LM25UU	100	160	600
HF30	30	30	39	78	72	59.5	49	15	58	58					LM30UU	160	280	735
HF35	35	34	45	90	80	68	54	18	70	70	60	M10	8.7	25	LM35UU	170	320	1100
HF40	40	40	51	102	90	78	62	20	80	80					LM40UU	220	410	1590

* Includes weight of LM Bearing.



SHAFT END SUPPORT (E-- SERIES)

MODEL NO	Shaft diameter d	h ±0.02	E ±0.05	W	L	F	G	P	B	S	Locking bolt S	Mounting bolt N	Unit Weight g
E16	16	27	24	48	16	44	8	25	38	5.5	M4	M5	40
E20	20	31	30	60	20	51	10	30	45	6.6	M5	M6	70
E25	25	35	35	70	24	60	12	38	56		M6		130
E30	30	42	42	84	28	70		15	44	64	9	M8	M8
E35	35	50	49	98	32	82	50		74	11	M8		
E40	40	60	57	114	36	96	60	90	420				
E50*	50	70	63	126	40	120	18	74	100	14	M12	M12	750

1 Other sizes upon request. 1 * Check for availability

