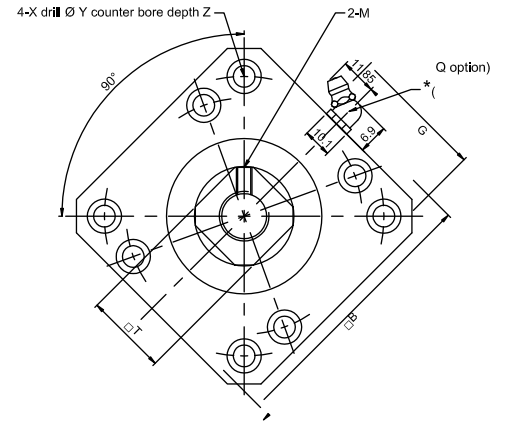
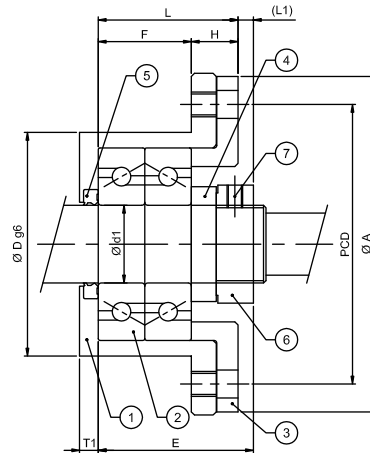


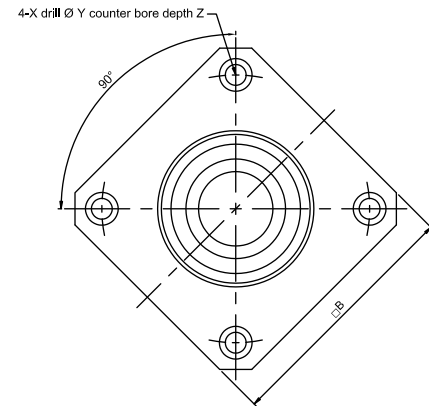
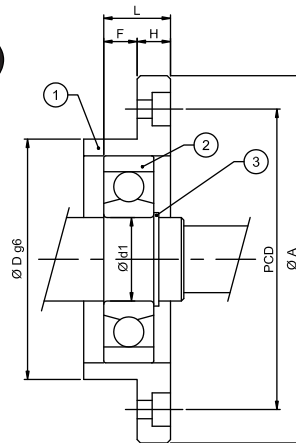
# BALL SCREW SUPPORT UNIT

## Support Unit FK (Fixed side round type)



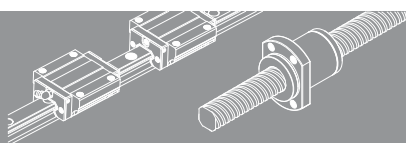
Model No.	Shaft diameter d1	L	H	F	E	Dg6	A	PCD	B	Mounting L1	T1	L2	T2	X	Y	Z	M	T	G	Q
FK 10	10	27	10	17	29.5	34 -0.009 -0.025	52	42	42	7.5	5	8.5	6	4.5	8	4	M3	16	-	-
FK 12	12	27	10	17	29.5	36 -0.009 -0.025	54	44	44	7.5	5	8.5	6	4.5	8	4	M4	19	-	-
FK 15	15	32	15	17	36	40 -0.009 -0.025	63	50	52	10	6	12	8	5.5	9.5	6	M4	22	-	-
FK 17	17	45	22	23	47	50 -0.009 -0.025	77	62	61	11	9	14	12	6.6	11	10	M4	24	-	-
FK 20	20	52	22	30	50	57 -0.010 -0.029	85	70	68	8	10	12	14	6.6	11	10	M4	30	34	M6
FK 25	25	57	27	30	50	63 -0.010 -0.029	98	80	79	13	10	20	17	9	15	13	M5	35	39	M6
FK 30	30	62	30	32	51	75 -0.010 -0.029	117	95	93	11	12	17	18	11	17.5	15	M6	40	46	M6

## Support Unit FF (Support - side round type)



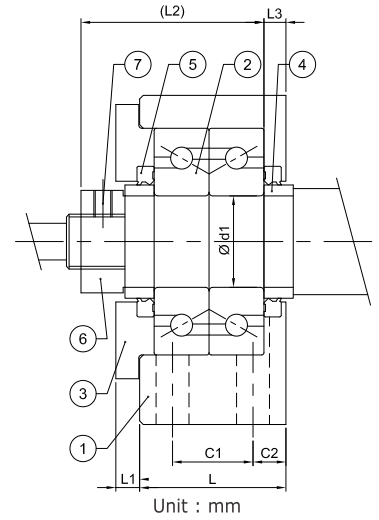
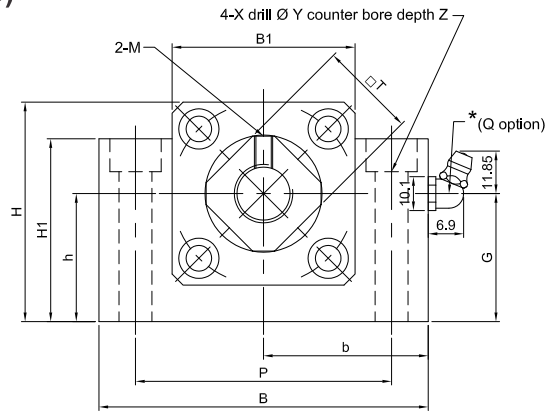
Unit : mm

Model No.	Shaft diameter d1	L	H	F	Dg6	A	PCD	B	X	Y	Z	Bearing	Snap ring
FF 06	6	10	6	4	22 -0.007 -0.02	36	28	28	3.4	6.5	4	606ZZ	S 06
FF 10	8	12	7	5	28 -0.007 -0.02	43	35	35	3.4	6.5	4	608ZZ	S 08
FF 12	10	15	7	8	34 -0.009 -0.025	52	42	42	4.5	8	4	6000ZZ	S 10
FF 15	15	17	9	8	40 -0.009 -0.025	63	50	52	5.5	9.5	5.5	6002ZZ	S 15
FF 17	17	20	11	9	50 -0.009 -0.025	77	62	61	6.6	11	6.5	6203ZZ	S 17
FF 20	20	20	11	9	57 -0.010 -0.029	85	70	68	6.6	11	6.5	6204ZZ	S 20
FF 25	25	24	14	10	63 -0.010 -0.029	98	80	79	9	14	8.5	6205ZZ	S 25
FF 30	30	27	18	9	75 -0.010 -0.029	117	95	93	11	17	11	6206ZZ	S 30



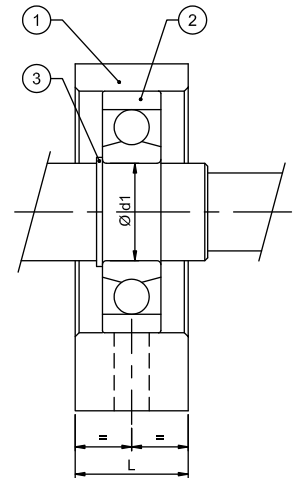
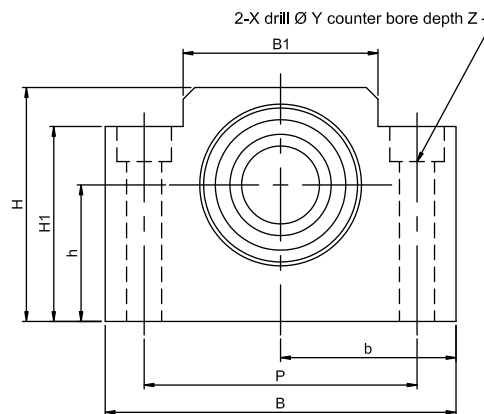
# BALL SCREW SUPPORT UNIT

## Support Unit BK (Fixed - side rectangular type)



Model No.	Shaft diameter d1	L	L1	L2	L3	B	H	b ±0.02	h ±0.02	B1	H1	P	C1	C2	X	Y	Z	M	T	G	Q
BK 10	10	25	5	29	5	60	39	30	22	34	32.5	46	13	6	6.6	10.8	5	M3	16	-	-
BK 12	12	25	5	29	5	60	43	30	25	34	32.5	46	13	6	6.6	10.8	1.5	M4	19	-	-
BK 15	15	27	6	32	6	70	48	35	28	40	38	54	15	6	6.6	11	6.5	M4	22	-	-
BK 17	17	35	9	44	7	86	64	43	39	50	55	68	19	8	9	14	8.5	M4	24	-	-
BK 20	20	35	8	43	8	88	60	44	34	52	50	70	19	8	9	14	8.5	M4	30	26.7	M6
BK 25	25	42	12	54	9	106	80	53	48	64	70	85	22	10	11	17	11	M5	35	39.5	M6
BK 30	30	45	14	61	9	128	89	64	51	76	78	102	23	11	14	20	13	M6	40	41.5	M6
BK 35	35	50	14	67	12	140	96	70	52	88	79	114	26	12	14	20	13	M8	50	42.5	M6
BK 40	40	61	18	76	15	160	110	80	60	100	90	130	33	14	18	26	17.5	M8	50	42.5	M6

## support unit BF Type



Model No.	Shaft diameter d1	L	B	H	b ±0.02	h ±0.02	B1	H1	P	X	Y	Z	Bearing	Snap ring
BF 10	8	20	60	39	30	22	34	32.5	46	6.6	10.8	5	608ZZ	S 08
BF 12	10	20	60	43	30	25	34	32.5	46	6.6	10.8	1.5	6000ZZ	S 10
BF 15	15	20	70	48	35	28	40	38	54	6.6	11	6.5	6002ZZ	S 15
BF 17	17	23	86	64	43	39	50	55	68	9	14	8.5	6203ZZ	S 17
BF 20	20	26	88	60	44	34	52	50	70	9	14	8.5	6004ZZ	S 20
BF 25	25	30	106	80	53	48	64	70	85	11	17	11	6205ZZ	S 25
BF 30	30	32	128	89	64	51	76	78	102	14	20	13	6206ZZ	S 30
BF 35	35	32	140	96	70	52	88	79	114	14	20	13	6207ZZ	S 35
BF 40	40	37	160	110	80	60	100	90	130	18	26	17.5	6208ZZ	S 40

